

AWIS



ASSOCIATION FOR WOMEN IN SCIENCE

Chicago

Newsletter

The Association for Women in Science (AWIS) is a non-profit organization dedicated to achieving equity and full participation of women in all areas of science, technology, and engineering.

The Chicago Area Chapter of the Association for Women in Science was founded in 1978 as a local chapter of the national organization.

For membership information, please visit us at: www.awis-chicago.org

or contact us at:
info@awis-chicago.org

Mission

AWIS Chicago Chapter Board Members

President:

Keng Jin Lee, PhD

Past President:

Joy Ramos, PhD

Head, Industry Liasons Committee:

Paroo Uppal, MSE, MBA

VP for Membership:

Eliza Vakana

VPs for Communications:

Eun Ji Chung, PhD,
Marina Pazin, PhD

VPs for Outreach:

Karen Chien,
Kalpana Ramakrishnan

VP for Finance:

Kelly Coller Metzinger, PhD

Newsletter Editor:

Tara Teppen, PhD

Inside...

Fall 2012 Events	page 2
Winter 2013 Events	page 3
Highlights	page 4
Upcoming Events	page 5
Membership	page 6
Sponsorship	page 7

Fall Kickoff Networking Event

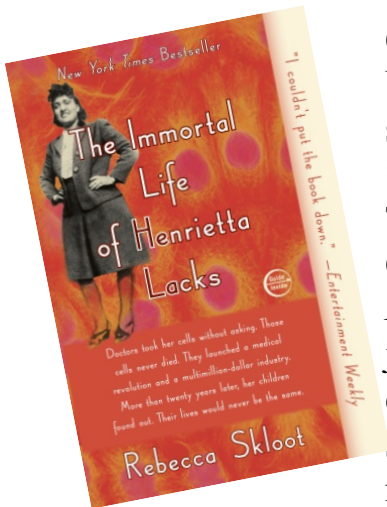
Thursday, October 18th, 2012 was AWIS Chicago's Fall 2012 kick-off meet and mingle networking event where attendees met the new AWIS Chicago Board, mingled with other scientists from academia and industry and learned about exciting upcoming AWIS Chicago events! The kickoff event had a successful turnout with around 50 guests, including long-time AWIS Chicago members as well as many new faces. Participants enjoyed meeting other scientists from Universities and businesses across Chicagoland at differing stages of their careers.



Fall Kickoff attendees networking at D4 pub & café in River North

The event also provided an opportunity for the new board members to, both formally and informally, poll attendees regarding what type of events they would like to see AWIS host in the future. We received many fantastic suggestions, some of which we were immediately able to schedule, and we look forward to an exciting year with many more events to come!

Personal Journeys in STEM at University of Chicago Hospital



On November 3rd, 2012, AWIS, in collaboration with Baxter and University of Chicago, hosted 300 Chicago Public School high school students to explore and create a personal journey in STEM (Science, Technology, Engineering and Mathematics). The event began with an inspirational lecture by renowned Chicago author, Rebecca Skloot, who discussed her book, *The Immortal Life of Henrietta Lacks*, and described her 10 year journey to write this true story unfolding the advent of the commonly used HeLa cell line. In addition, a unique behind the scenes tour of the new University of Chicago hospital and robotic surgery room was provided. The event also connected students with a variety of professionals working in STEM

careers during small group discussions in an effort to educate and inspire students in our communities regarding STEM careers and research through their own journeys.

Alternative Career Panel

Exposure to careers away from the laboratory bench can be hard to come by for those of us working in academic settings. Therefore, on January 22nd, 2013, at Northwestern's Lurie campus, AWIS Chicago hosted an alternative career panel to help attendees learn about alternative career paths outside academia. Our distinguished panelists were **Melanie Beglin, PhD** - Research Manager, Pediatric Clinical Trials at the University of Chicago, **Jessica Reimer, PhD** - Scientific communications supervisor at Weber Shandwick and past VP for Communications for AWIS Chicago, **Lynn Janulis, PhD** - Patent Lawyer with Marshall, Gerstein & Borun LLP, and **Loly Farnos, PhD** - Director for Growth & Strategy for Catalyst, Adsorbents and Specialties at UOP Honeywell and founding member of AWIS-Philadelphia. Although our panelists described very different job responsibilities and career paths, many similarities were noted throughout their stories, such as how an originally unanticipated career shift lead them into the successful and satisfying careers they now possess. Another common theme was to not be afraid to take chances. Attendees were very animated during the question and answer session, asking a plethora of questions and had an opportunity to network with the panelists at the end of the evening.



(L-R) Melanie Beglin, Lynn Janulis, Loly Farnos, Jessica Reimer

Career Roadmap to Success



AWIS Chicago members came together in an enthusiastic first-time collaboration with Healthcare Businesswomen's Association (HBA) to welcome Dr. Clair Callan, author of *Sevoflurane...the Untold Story of How a Dedicated Team Brought the Most Used Inhalation Anesthetic to the World*, as part of the Career Roadmap to Success seminar series. Dr. Callan, who was fundamental in bringing this drug to market, shared her story of success and provided an opportunity to answer questions about being a successful employee in an industrial setting. Located at Lovell's restaurant in Lake Forest on January 29th, 2013, the evening received a prosperous turnout despite the cold blustery weather. This event turned out to be a great networking opportunity, bringing together male and female scientists from major pharmaceutical companies across the Chicagoland area. AWIS Chicago looks forward to future collaborations with HBA!



Scientists of the month

Click <http://www.awis-chicago.org/community> for more details

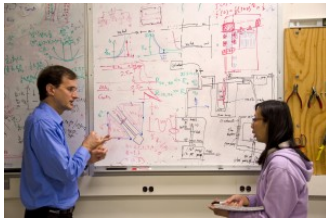
November 2012 Scientist of the Month: Chinonye (Chi-Chi) Nnakwe

Dr. Chinonye (Chi-Chi) Nnakwe is the Director of Graduate Diversity Recruitment at the University of Chicago, a newly-created position that aims to increase the population of traditionally underrepresented groups in the graduate school. Her main objective is to make the PhD degree tangible to students as early as high school and to increase name recognition, recruitment, and retention. While Chi-Chi's research experience as a graduate student and her time as a consultant provided great technical and managerial experience, she recognizes her interaction with students and the ability to mentor to be incredibly rewarding.



Chinonye (Chi-Chi) Nnakwe

November 2012 Scientist of the Month: Matthew Grayson



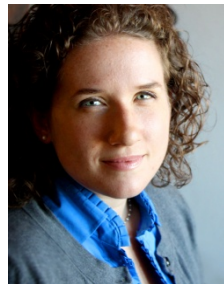
Matthew Grayson

Dr. Matthew Grayson founded ETOPIA (Engineering Transdisciplinary Outreach Project in the Arts) at Northwestern in 2008 and has produced, and sometimes starred in, the autumn productions. For Grayson, the ETOPIA plays serve to start a conversation about the purpose and relevance of science in our lives. When he is not on stage, Dr. Matthew Grayson can be found in his role as Associate Professor of Electrical Engineering and Computer Science at Northwestern. His training includes a PhD from Princeton and postdoc from the Technical University of Munich. As with most other academic researchers, Dr. Grayson sees challenges ahead in publishing the next manuscript, getting the next grant, and graduating the next student. However, he views these as part of the reason he chose this profession.

January 2013 Scientist of the Month: Christine McCary

During her graduate work at Northwestern, Christine discovered that although she loved bench work and teaching, she found these parts of the job were often minimized by the grants-driven reality of the profession and started to investigate postdoc options beyond the traditional academic track. After grad school, Christine did a postdoc at the University of Chicago's Office of Biosafety before joining the Career Advancement team as an Assistant Director for Graduate Services where she works with students and postdocs from the Biological and Physical Sciences Divisions, helping them make informative choices on their career paths.

Christine McCary



Spotlight on AWIS Chicago VP for Membership: Eliza Vakana

Eliza is currently pursuing her PhD in the Driskill Graduate Program in the Life Sciences at Northwestern University's Feinberg School of Medicine with a focus in oncology research. Her current projects include targeting specific signaling pathways in Chronic Myeloid Leukemia in search for potential targeting candidates to overcome patient resistance to chemotherapy. She anticipates to graduate in June 2013 and aspires to bridge the gap between the business and scientific aspects of drug development within the pharmaceutical industry.



Eliza Vakana

Mentorship Workshop

On **Saturday April 6th from 10:30am to 1:30pm** Rick McGee, the coordinator for CLIMB, a newly launched mentoring program for grad students in biosciences at Northwestern, will lead a mentorship workshop in collaboration with AWIS Chicago. During the workshop we will tackle such topics as: Starting a mentoring relationship, Maintaining a mentorship relationship, Finding and selecting an appropriate mentor (or mentee), Communication, Aligning expectations and Dealing with awkwardness. The workshop will be held at **Northwestern's downtown campus in the Suker Conference Room on the 12th floor of the Rubloff Building, 420 E. Superior St.**

Communication Skills with *Breaking Bad's* Donna Nelson

AWIS Chicago, in association with Northwestern's Ready, Set, Go communication fellowship, are proud to present Dr. Donna Nelson, the science advisor for the TV show *Breaking Bad*, for a keynote address to RSG students and the greater science community on **Friday April 19th**. Ready, Set, Go is designed to assist students improve and become more comfortable with their oral and presentation skills as well as help them customize their research story for any audience. This free seminar will be held at Northwestern's Lurie campus, downtown Chicago. Keep an eye out for our listserv emails for more information.

Outreach Opportunity: Science Club

"Science Club" is an after school program that allows students to directly engage with a wide range of science through hands on experimentation. The program provides students invaluable exposure to scientists and STEM concepts not typically accessible through their schools. Volunteers with a strong science/education/social work background to act as "group leaders" for students ranging from 5th-8th grade. The volunteers will provide guidance with concepts and lead the students through the given experiments for the week from 4-6 pm. Volunteers must commit to participate one day a week. Contact Jonathon at j.freaney@ulbgc.org for more information or to volunteer.



First Annual Chicago Healthcare Summit

The First Annual Chicago Healthcare Professional Association Summit will take place at Maggiano's Little Italy, 516 North Clark Street in Chicago on a date soon to be announced. Sponsored by the Healthcare Leadership Innovation Forum, this program will engage healthcare professionals and those new to the healthcare industry in meaningful association involvement. A variety of healthcare professional and networking associations will host information tables to share information with summit attendees. Presentations on social media engagement, non-profit board service, along with presentations by associations will take place throughout the day.

Yearly National Dues

- **Student, Post-doctoral Fellow in training or Retiree:** \$25
- **Regular Member:** \$65
- **Sustaining Member:** \$150
- **Patron:** \$500
- **Benefactor:** \$1000

Chicago Chapter Yearly Dues

- **All members:** \$10
- (Note: Chapter dues are not included in National Dues; these go directly to the chapter to fund programming.)

Benefits of becoming an AWIS Chicago member:

- Discounted registration to chapter events (FREE or approximately 1/2 the price of general registration)
- Monthly AWIS Chicago emails detailing AWIS and other Chicago area science events
- *Members-only* invitations to networking events
- Broad variety of social, career development and outreach programming designed to engage the local community
- Access to local leaders in STEM research, industry and alternative careers

Benefits of becoming a National AWIS member:

- Members-only career development webinars and coaching sessions developed with STEM professionals in mind.
- Access to the quarterly AWIS Magazine featuring columns and articles written by scientists
- Full usage of the AWIS website, including discussion features, access to job listings and nationwide member directories
- Bi-monthly Washington Wire e-newsletter

Go to www.awis.org to join. It only takes a few minutes to sign up!

CONTACT INFO FOR MEMBERS

- **President :** Keng Jin Lee (kengjin@awis-chicago.org)
- **VP for Membership:** Eliza Vakana (membership@awis-chicago.org)

Gold Sponsor (\$5000 or Greater)

- 10 sponsored AWIS memberships
- Logo on the front page of our website (with link to company website) for one calendar year
- Logo on all advertisements for events for one calendar year
- ½ page advertisement in both installments of our newsletter
- Presence at our annual AWIS dinner
- Listing on the sponsorship page of our website
- AWIS involvement in company science outreach initiatives

Silver Sponsor (\$3000)

- 6 sponsored AWIS memberships
- Logo on advertisements for 3 events in one calendar year
- ¼ page advertisement in both installments of our newsletter
- Listing on the sponsorship page of our website
- AWIS involvement in company science outreach initiatives

Bronze Sponsor (\$1000)

- 2 sponsored AWIS memberships
- Logo on advertisements for 1 event in one calendar year
- 1/8 page advertisement in both installments of our newsletter
- Listing on the sponsorship page of our website
- AWIS involvement in company science outreach initiatives

Friend of AWIS (< \$1000)

- Listing on the sponsorship page of our website
- Name mentioned in our newsletter

CONTACT INFO FOR SPONSORS

- **President** :
Keng Jin Lee (kengjin@awis-chicago.org)
- **Head, Industry Liasons Committee**:
Paroo Uppal (programs@awis-chicago.org)

Benefits and Savings for AWIS Chicago Members

Event	Non -member	AWIS Chicago member
Career development webinars (\$200+)	No access	FREE
Award -winning AWIS magazine	No access	FREE
Career Panel Kickoff	\$15	\$10
Career Skills workshops	\$10, \$10	FREE
Innovator Award	\$30	\$10
WIB entrepreneurship event	\$35	\$15
Other benefits (discounted price for Donna Jean's Mentoring Handbook, etc.)	>\$33	>\$26
Total costs	>\$ 333	\$86
Savings vs non -members		>\$247
Annual registration fee (national + chapter)		\$75 (regular), \$35(student)
Total savings per year		>\$190/year
Access to AWIS members' network	PRICELESS !	

Gold Sponsor



Expanding Minds with Real-World Science

Baxter

Silver Sponsor



Abbott

A Promise for Life